



**190S2** Series is a robust, durable and economical solution for various weighing tasks. Designed according to IP 66, it is designed for meet light wash-down hygienic requirements.

It is programmed to provide fast, easy, reliable and straightforward operation to meet an extraordinary wide range of applications no matter as a standalone unit or incorporated in an integrated weighing system.

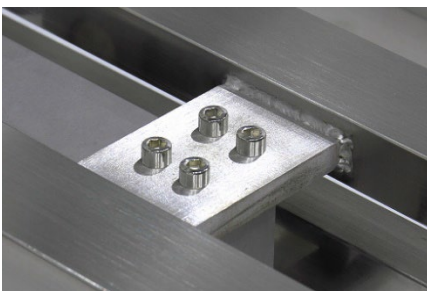
### Functions

- Static Weighing, Medium ~ Low Speed Dynamic Weighing, Piece Counting, Peak Hold, Animal Weighing
- Support Single Range, Dual Range and Dual Interval Operation
- Support both Tension and Compression Load / Force Direction
- Near Zero Weight Value for Dynamic Weighing to avoid False Signal Output
- Add-Tare-Memory (ATM) & Remove-Tare-Memory (RTM) Function
- Manual, Preset, Auto, Repetitive and Continuous Tare Operation
- Weight and Quantity Check Mode
- Check Result Control for Accumulation, Data Printout & Data Output
- Keypad Lock Function



### Platform Features

- SUS #304 Stainless Steel Structure
- Rugged Structure for Harsh and Rugged Environment
- Complete Sealed Design Platform to Prevent Liquid Penetration
- Overload Protection Devices to Withstand Shocks & Overloads
- Aluminum Load Cell to Increase Accuracy



***Versatility, Functionality and Accuracy are always Built-in***

# 190S2 Stainless Steel Multi-Function Bench Scales Series

## Operation and Management Features

- Completely Sealed Heavy Duty SUS #304 Stainless Steel Housing. Designed according to IP66
- Configurable Machine ID, Machine Group and Operator Number to Enhance Ease of Multi-Scales Applications and Management Records
- Customer & Product Code Support Numeric Numbers When Input through Keypad
- Customer & Product Code Support Numbers, Alphabets and Symbols Characters When Input Through Scanner or PC
- Support External [Zero], [Tare] and [Print/M+] Key Input through Scanner
- Tri-Color Check Result Indication
- Configurable Keypad, Check & System Buzzer
- 2 x Independently Configurable Bi-Direction Serial Comports. Selectable TTL Output for Comport 1
- Support Inquiry, Setting and Execution Commands through PC
- All Current Operation Results Output in Data Base Format Increases Ease & Efficiency of Data Management, Processing & Analysis
- Support Ticket Printer and Label Printer
- Label Printers Supported:
  - Datscs: LP-50
  - TSC: TDP/TTP-225, TDP/TTP-247, TDP/TTP-345, DH/TH220 Series, DH/TH240 Series, DH/TH340 Series
- Selectable Portrait / Landscape Ticket Printout Format
- 6 x 45mm Huge Size Bold Type Wide Angle LCD Numeric Digits
- Zero, Gross, Net, Weighing Range, Memory & Battery Level & Recharge Indicators
- Watchdog System to Prevent Damages caused by Load Cell Short-circuit
- Smart Charging Circuits
- Real Time Clock

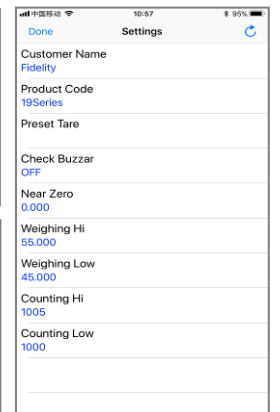
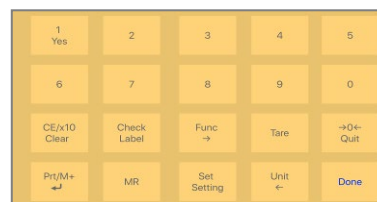


*Adjustable Tri-Color Check Result Backlight*

## Apps for Smart Phones & Devices

Free iOS App (i19) & Android App (a19) are available at App Store and Google Play respectively.

These Apps are so powerful that actually they turn your smart devices into a handheld terminal, remote display, remote data input center and controller of your FM product connected.



Both Apps support connection via Bluetooth and WIFI.

***Versatility, Functionality and Accuracy are always Built-in***



# 190S2 Stainless Steel Multi-Function Bench Scales Series

## Specifications

Model No.	Capacity	Readability		Platform Dimensions	IP Rating
		Approved	Non-Approved		
190S2-B30	30kg	0.01kg	0.001kg	300 x 400mm	IP65
190S2-B60	60kg	0.02kg	0.002kg		
190S2-B150	150kg	0.05kg	0.005kg		
190S2-F30	30kg	0.01kg	0.001kg	400 x 500mm	IP65
190S2-F60	60kg	0.02kg	0.002kg		
190S2-F150	150kg	0.05kg	0.005kg		
190S2-F300	300kg	0.1kg	0.01kg		
190S2-L60	60kg	0.02kg	0.002kg	500 x 650mm	IP65
190S2-L150	150kg	0.05kg	0.005kg		
190S2-L300	300kg	0.1kg	0.01kg		
Load Cell	<ul style="list-style-type: none"> <li>• Approval: - OIML C3</li> <li>• Material: - Aluminum</li> </ul>				
Weight Units	kg, g, lb				
Display	6 x 45mm Huge Size Bold Type Wide Angle LCD Numeric Digits				
Micro Processor	32-bit High Speed & High EMC Immunity				
A/D Converter	24 bit Low-Noise Delta to Sigma ( $\Delta-\Sigma$ )				
Tare Range	- Max (Subtractive Tare)				
Accessories	Universal Power Adaptor				
Operating Environment	-10 ~ 40°C (14 ~ 104°F) Non-condensed R.H. ≤85%				

*In the interest of improvement, specifications may change prior to notice*



Fidelity Measurement Company Limited

[www.fm.com.tw](http://www.fm.com.tw)

[info@fm.com.tw](mailto:info@fm.com.tw)

REV.: 190S2/26/05/04